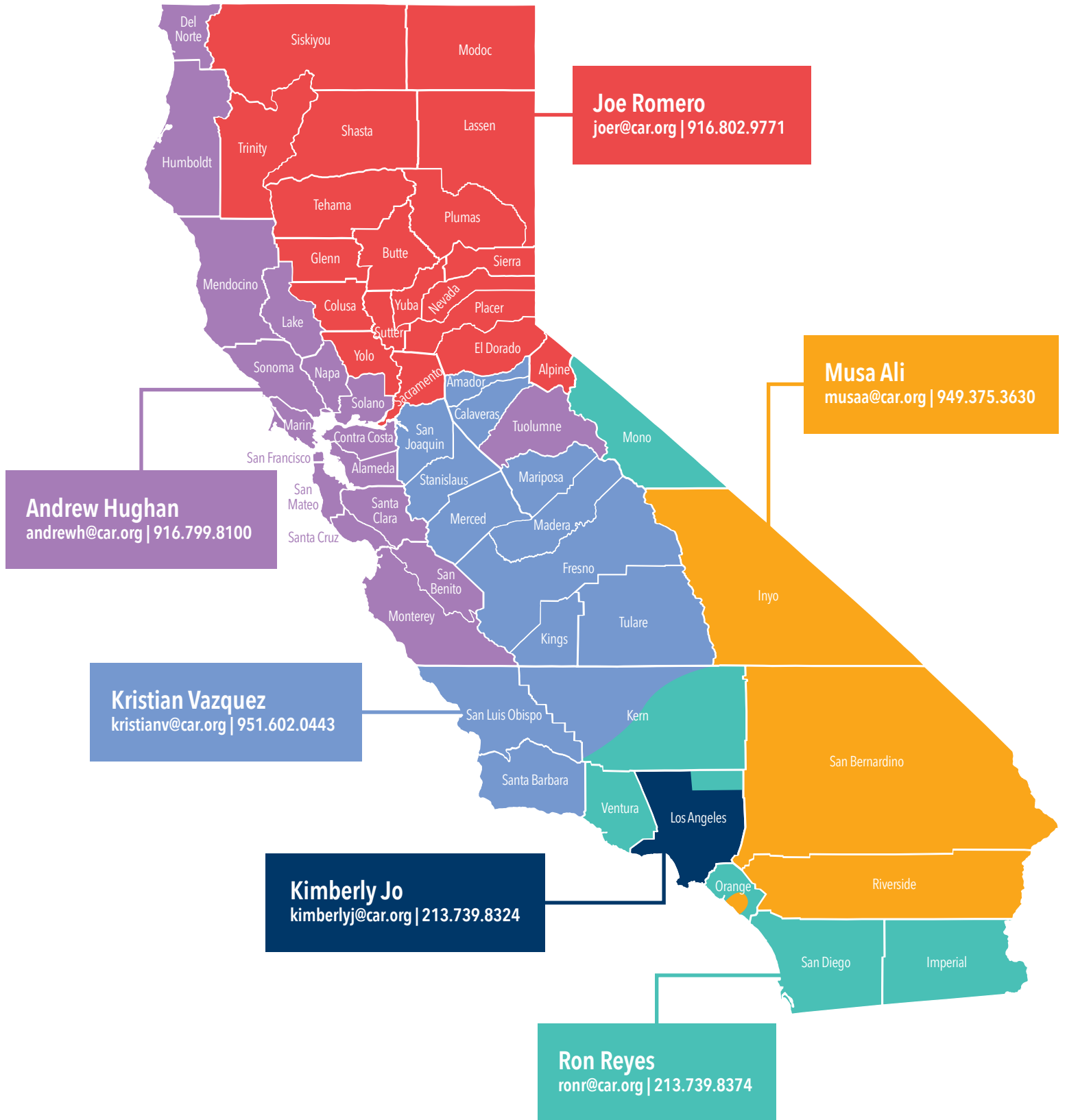


# 2025 C.A.R. Field Staff Roster



**REALTOR PARTY**  
★ of CALIFORNIA ★  
CALIFORNIA ASSOCIATION OF REALTORS®



# 2025 C.A.R. Field Staff Roster



**REALTOR PARTY**  
★ of CALIFORNIA ★  
CALIFORNIA ASSOCIATION OF REALTORS®

**Joe Romero**  
joer@car.org  
916.802.9771

El Dorado County  
Lassen  
Nevada County  
Oroville  
Paradise  
Placer County  
Plumas  
Sacramento  
Shasta  
Sierra North Valley  
Siskiyou  
South Tahoe  
Sutter Yuba  
Tahoe Sierra  
Tehama  
Yolo  
Trinity County

**Andrew Hugnan**  
andrewh@car.org  
916.799.8100

Bay East  
Bridge  
Coastal Mendocino  
Contra Costa County  
Del Norte  
Delta  
Humboldt  
Lake County  
Marin  
Monterey County  
North Bay  
Northern Solano  
San Benito County  
San Francisco  
San Mateo County  
Santa Clara County  
Santa Cruz County  
Silicon Valley  
Solano  
Tuolumne County

**Ron Reyes**  
ronr@car.org  
213.739.8374

Commercial Alliance of Orange County  
Conejo Simi Moorpark  
Greater San Diego  
Imperial County  
Laguna Beach  
Mammoth Lakes  
Newport Beach  
North San Diego  
Ojai Valley  
Orange County  
Pacific Southwest  
Ridgecrest  
Tehachapi  
Ventura County Coastal  
Greater Antelope Valley

**Kristian Vazquez**  
kristianv@car.org  
951.602.0443

Amador County  
Bakersfield  
Calaveras  
Central Valley  
Fresno  
Kings County  
Lodi  
Lompoc  
Madera  
Mariposa County  
Merced County  
North San Luis Obispo  
Pismo Coast  
San Luis Obispo Coastal  
Santa Barbara  
Santa Maria  
Santa Ynez Valley  
Tulare County

*If your primary field representative is unavailable,  
please find your secondary field representative [here](#).*

**Musa Ali**  
musaa@car.org  
949.375.3630

California Desert  
Greater Palm Springs  
High Desert  
Idyllwild  
Inland Valleys  
Joshua Tree Gateway  
Mountain Communities  
Southwest Riverside  
The Inland Gateway  
Tri-Counties  
Pacific West

**Kimberly Jo**  
kimberlyj@car.org  
213.739.8324

Arcadia  
Burbank  
Citrus Valley  
Glendale  
Greater Downey  
Greater Los Angeles  
Inglewood  
Malibu  
Montebello  
Palos Verdes Peninsula  
Pasadena Foothills  
Rancho Southeast  
South Bay  
Southland Regional  
Southwest Los Angeles  
West San Gabriel Valley

## Other C.A.R. Government Affairs Contacts

**Matt Bunch**  
*Director of Member Education  
and Mobilization*  
matthewb@car.org  
916.492.5233

**DeAnn Kerr**  
*SPC/FPCs*  
deannk@att.net  
630.428.4098

**Robert Moreno**  
*Local Government Relations Specialist*  
robertm@car.org  
831.229.3173

**Jennifer Svec**  
*Vice President of  
Public Policy and Advocacy*  
jennifers@car.org  
916.284.1770

**Lisa Edwards**  
*PAC Fundraising Manager*  
lisae@car.org  
916.492.5211

**John Scribner**  
*Manager of Public Policy*  
johns@car.org  
916.947.3774